



21 Downham Crescent
Prestwich, Manchester, M25 0EH

£1,200 Per month



21 Downham Crescent

Prestwich, Manchester, M25 0EH

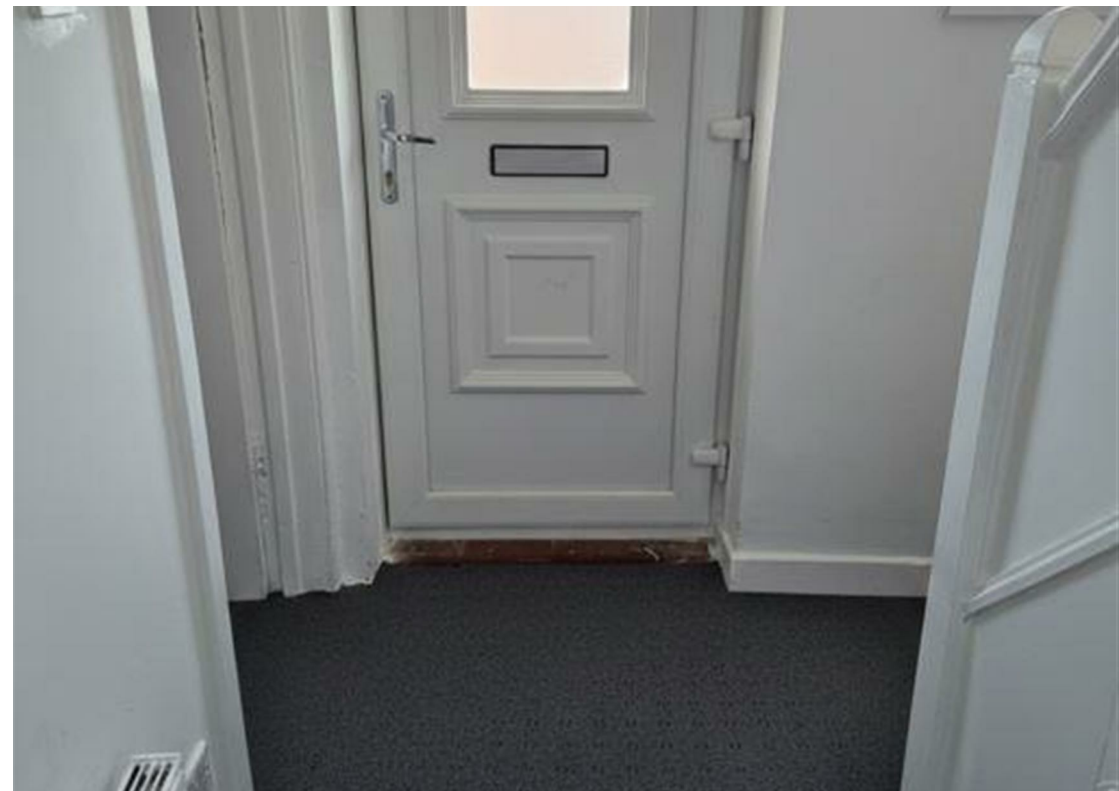
This three-bedroom semi-detached house for rent offers well-designed living accommodation, including a bright reception room, a fitted kitchen, a modern family bathroom, and three generously sized bedrooms. The property is offered unfurnished, providing flexibility for tenants to make the space their own.

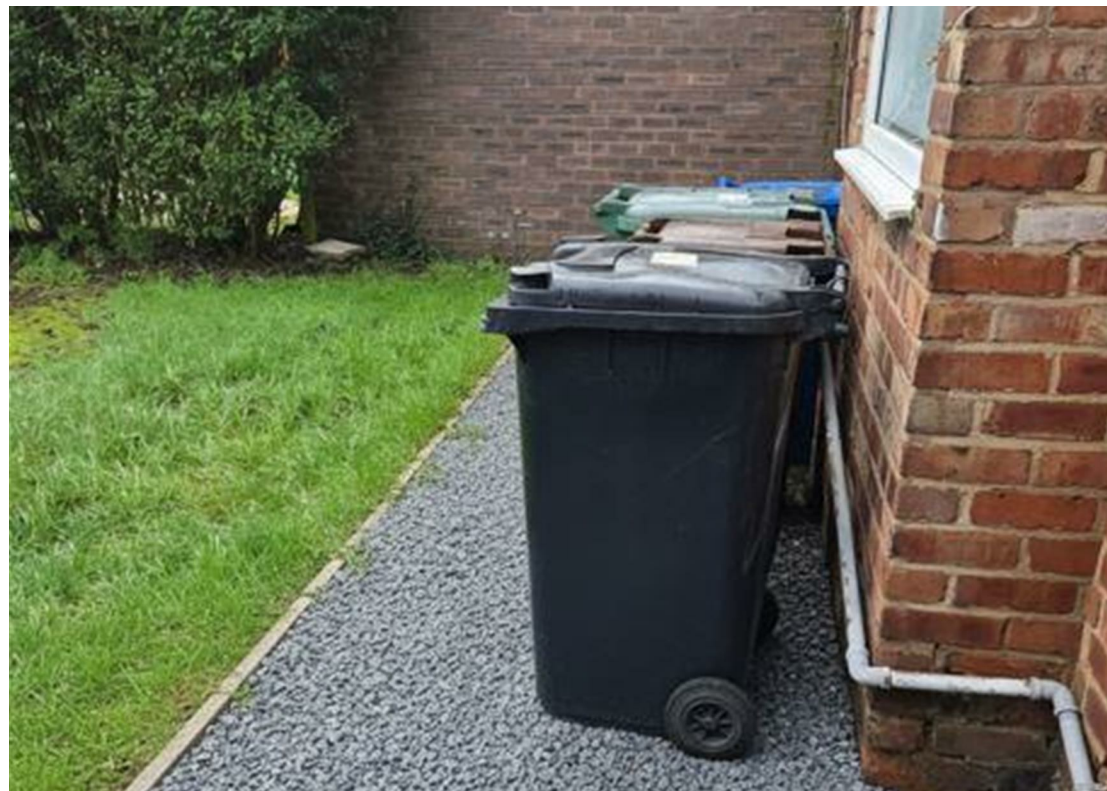
Key Features::

Well suited for families or professional tenants, the home also benefits from a private rear garden and a practical layout ideal for comfortable everyday living.

This three-bedroom semi-detached house for rent offers well-designed living accommodation, including a bright reception room, a fitted kitchen, a modern family bathroom, and three generously sized bedrooms. The property is offered unfurnished, providing flexibility for tenants to make the space their own.

Well suited for families or professional tenants, the home also benefits from a private rear garden and a practical layout ideal for comfortable everyday living.





Floor Plan



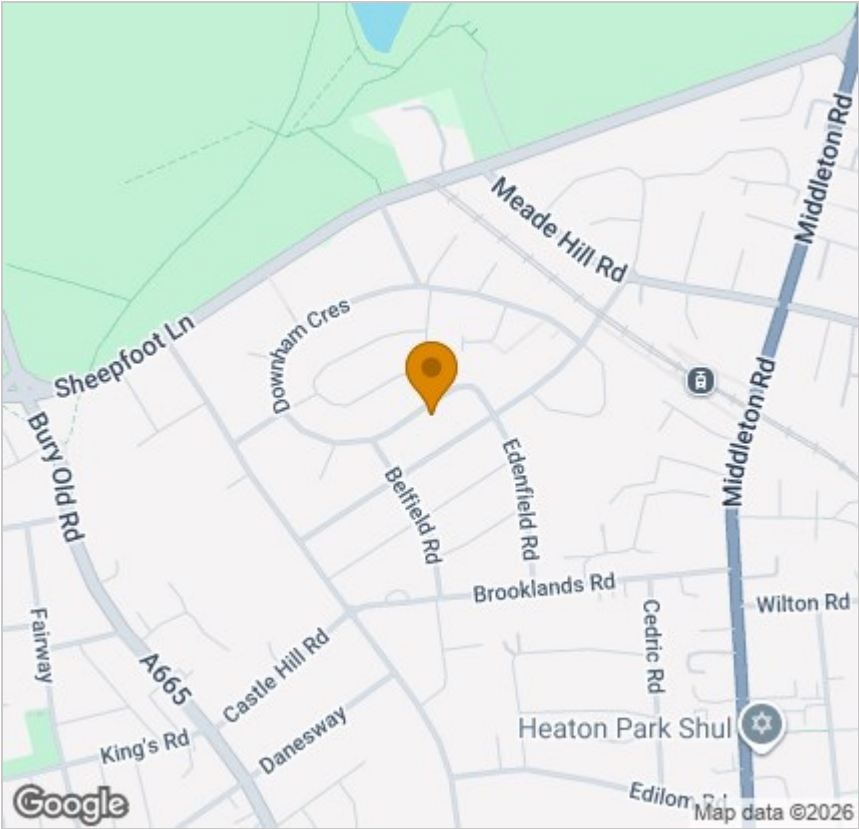
Viewing

Please contact our Urban Estates Office on 0333 433 0348 if you wish to arrange a viewing appointment for this property or require further information.

These particulars, whilst believed to be accurate are set out as a general outline only for guidance and do not constitute any part of an offer or contract. Intending purchasers should not rely on them as statements of representation of fact, but must satisfy themselves by inspection or otherwise as to their accuracy. No person in this firms employment has the authority to make or give any representation or warranty in respect of the property.

125 Deansgate, Lancs, M3 2BY
Tel: 0333 433 0348 Email: talat.ali@urbanestatesuk.co.uk <https://www.urbanestatesuk.co.uk/>

Area Map



Energy Efficiency Graph

